

Dengue in Our Backyard

Insights and Innovations from 2024

January 28, 2025
MVCAC 93rd Annual Conference

Jason Farned

District Manager

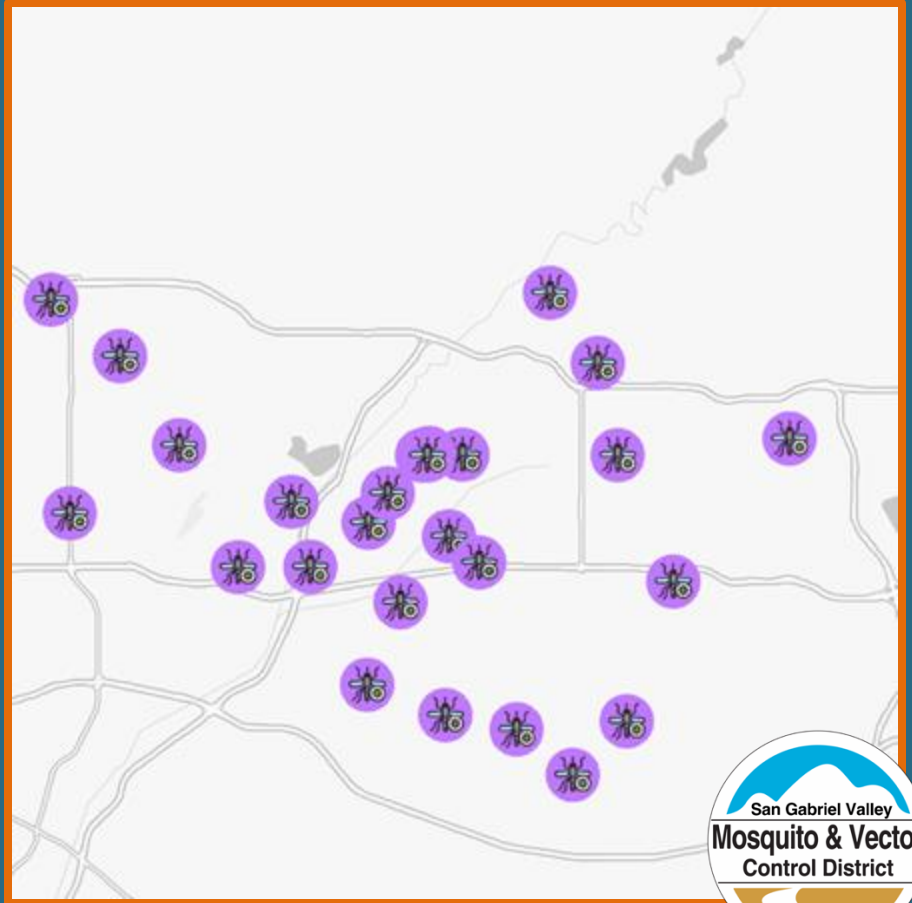
San Gabriel Valley Mosquito and Vector Control District



Dengue Activity in San Gabriel Valley

2023: 5 Travel, 2 Local

2024: 27 Travel, 11 Local



Enhanced Neighborhood Support (ENS)

Data driven, focused support for communities with elevated risk of disease.

Mosquito Control

- Door-to-door inspections
- Door hangers
- Adult treatment (if needed)

Surveillance

- Additional trapping and testing

Communication

- Targeted messaging and content
- Media Release(s)
- Crisis Communication

Administration

- Resident Support
- Field Support

Dengue Activity 2024

September 3	Local
September 4	Travel
September 11	Local
September 11	Local
September 12	Travel
September 30	Local
September 30	Travel
October 2	Travel
October 7	Local
October 7	Travel
October 9	Local
October 11	Travel
October 15	Local

October 15	Local
October 21	Local
October 21	Travel
October 23	Travel
October 23	Travel
October 28	Travel
October 28	Travel
October 28	Travel
October 29	Local
November 4	Travel
November 7	Local
December 5	Travel
December 5	Travel



Enhanced Neighborhood Support (ENS)

Data driven, focused support for **communities with elevated risk of disease.**



Enhanced Neighborhood Support (ENS)

The primary goals of the ENS response are to:

1. Identify target areas of maximum impact to reduce the threat of mosquitoes and mosquito- borne disease in a specific region
2. Request access to all private properties within the target area
3. Inspect all properties with permission to access
4. Leave educational material for all properties identified in the target area
5. Eliminate mosquito habitat
6. Identify new permanent sources and create new point sites
7. Educate and empower residents to adopt new habits that reduce the threat from vectors and vector-borne disease



Enhanced Neighborhood Support (ENS)

Data driven, focused support for **communities with elevated risk of disease.**

ENS Response Triggers

1. New species identification
2. Invasive species investigation and surveillance
3. West Nile Virus: Mosquito Pool Cluster
4. West Nile Virus: Environmental Cluster
5. Excessively High and Persistent Mosquito Populations
6. *Aedes*-born Disease: Travel-Related Human Case
7. *Aedes*-born Disease: Locally Transmitted Human Case



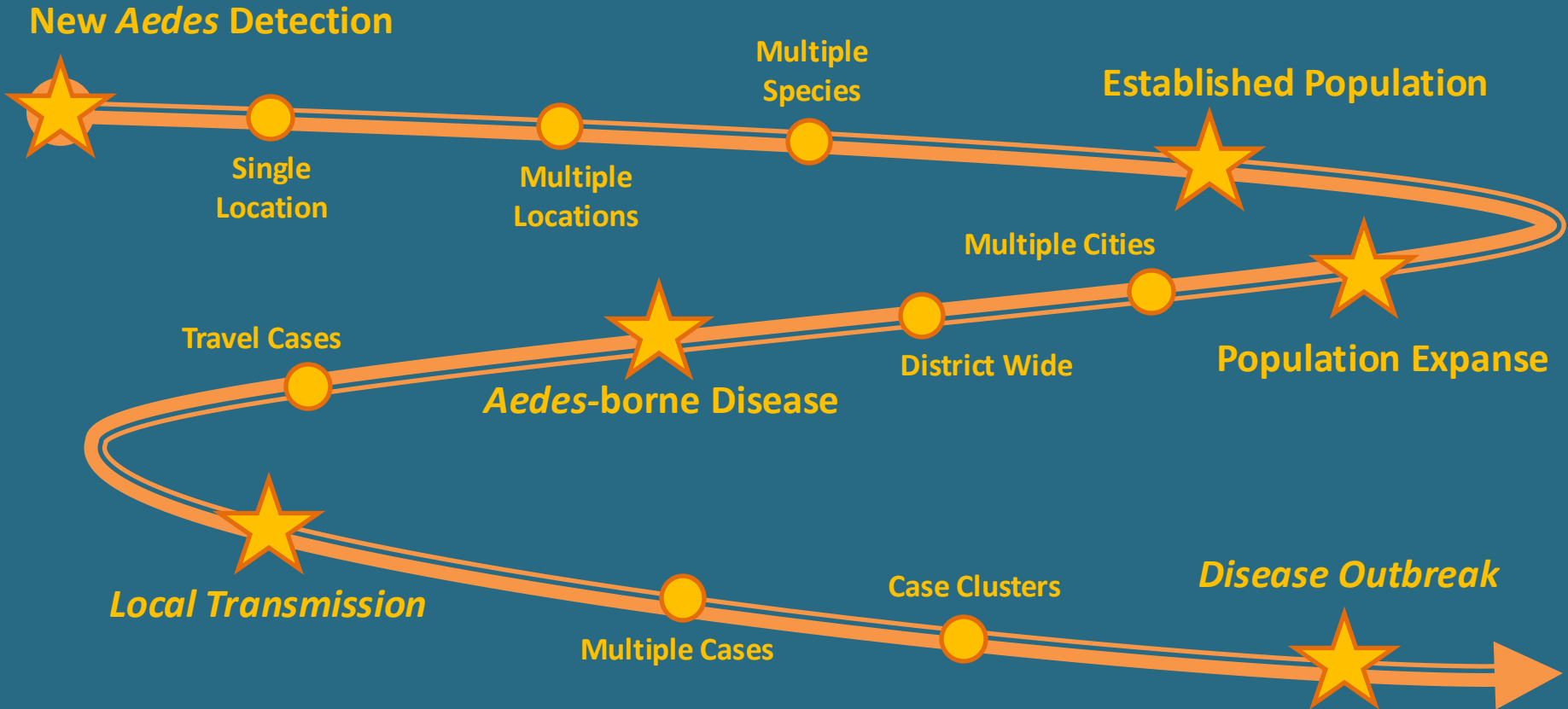
ENS Provided:

ROUTINE
COMMUNICATION
COOPERATION
CONFIDENCE
CONTROL

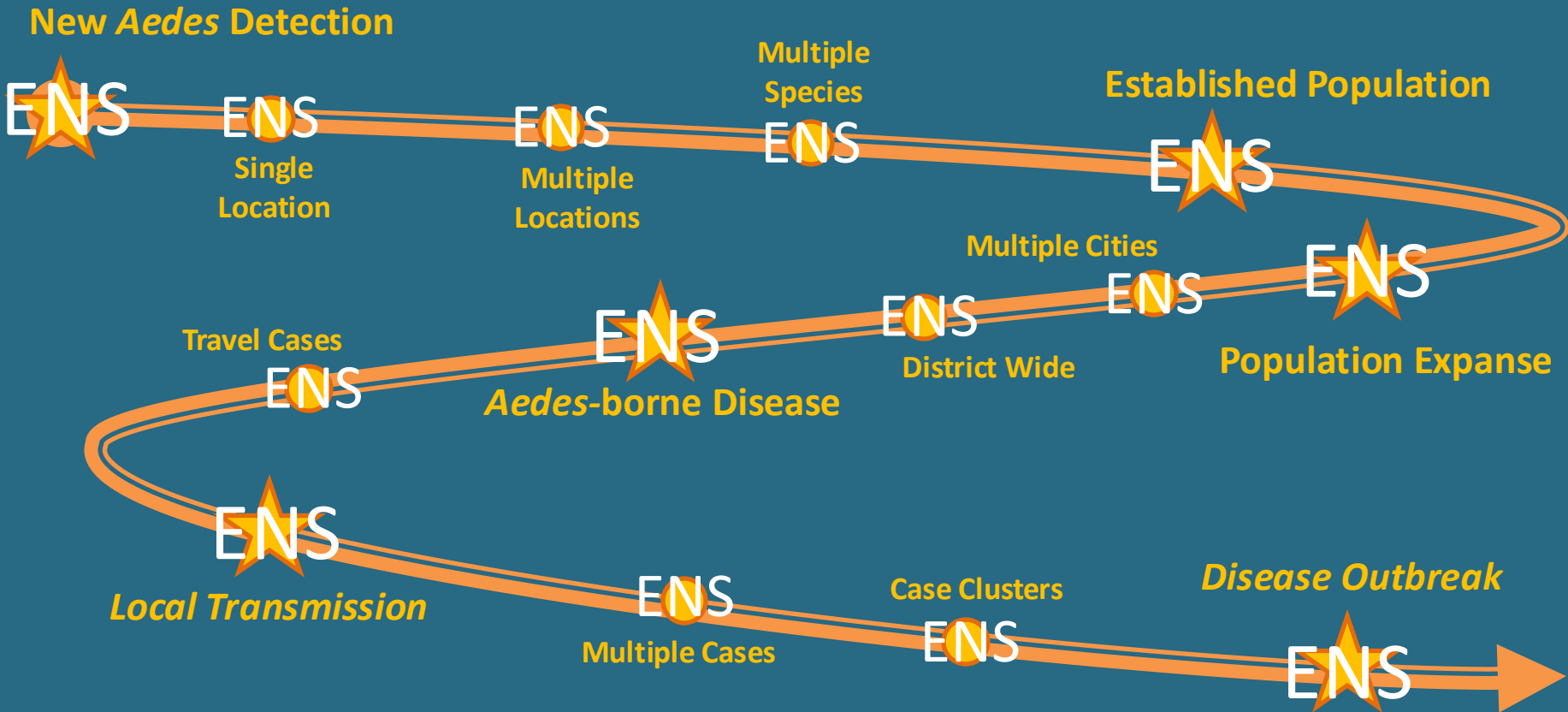
2024: 27 Travel, 11 Local



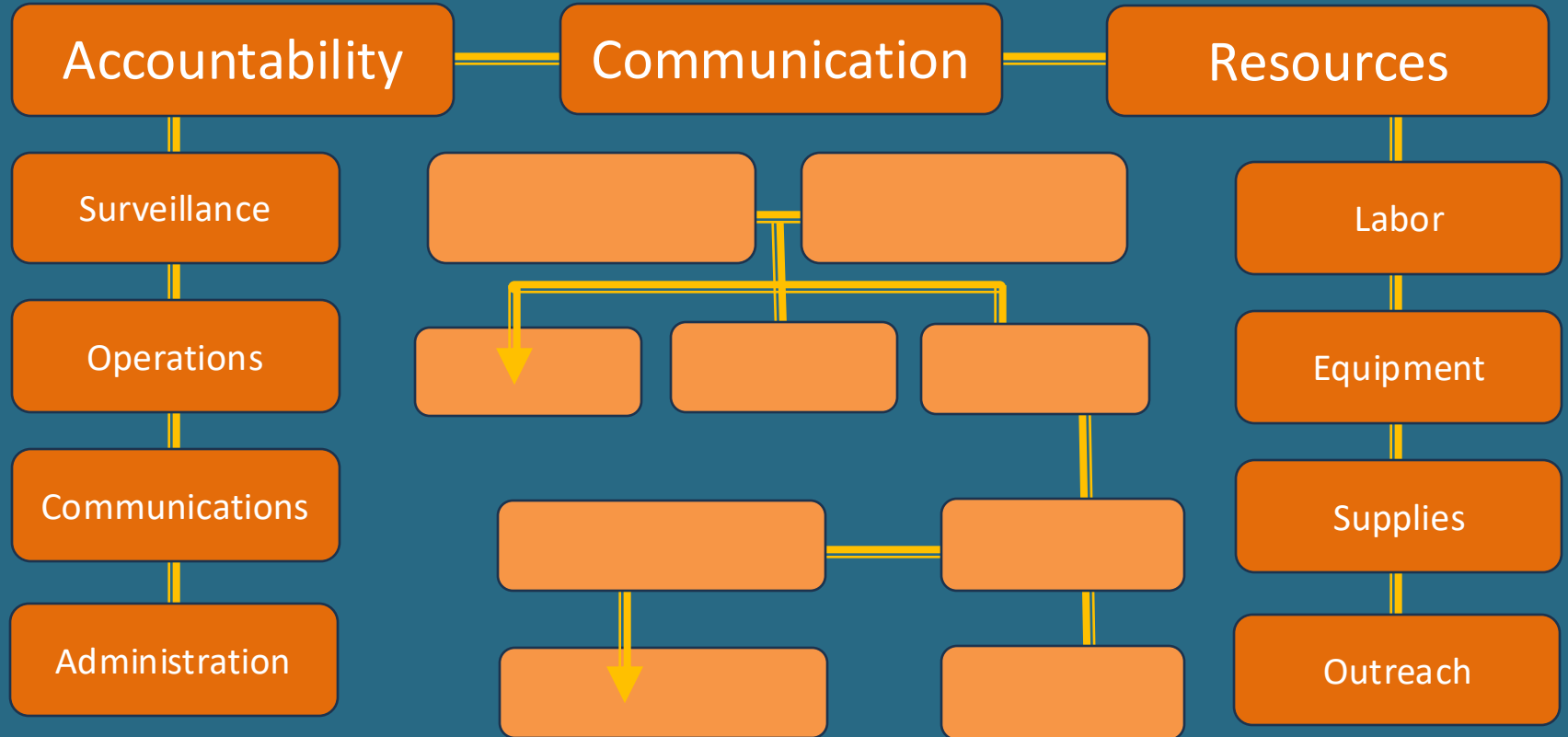
INVASIVE *Aedes* PROGRESSION

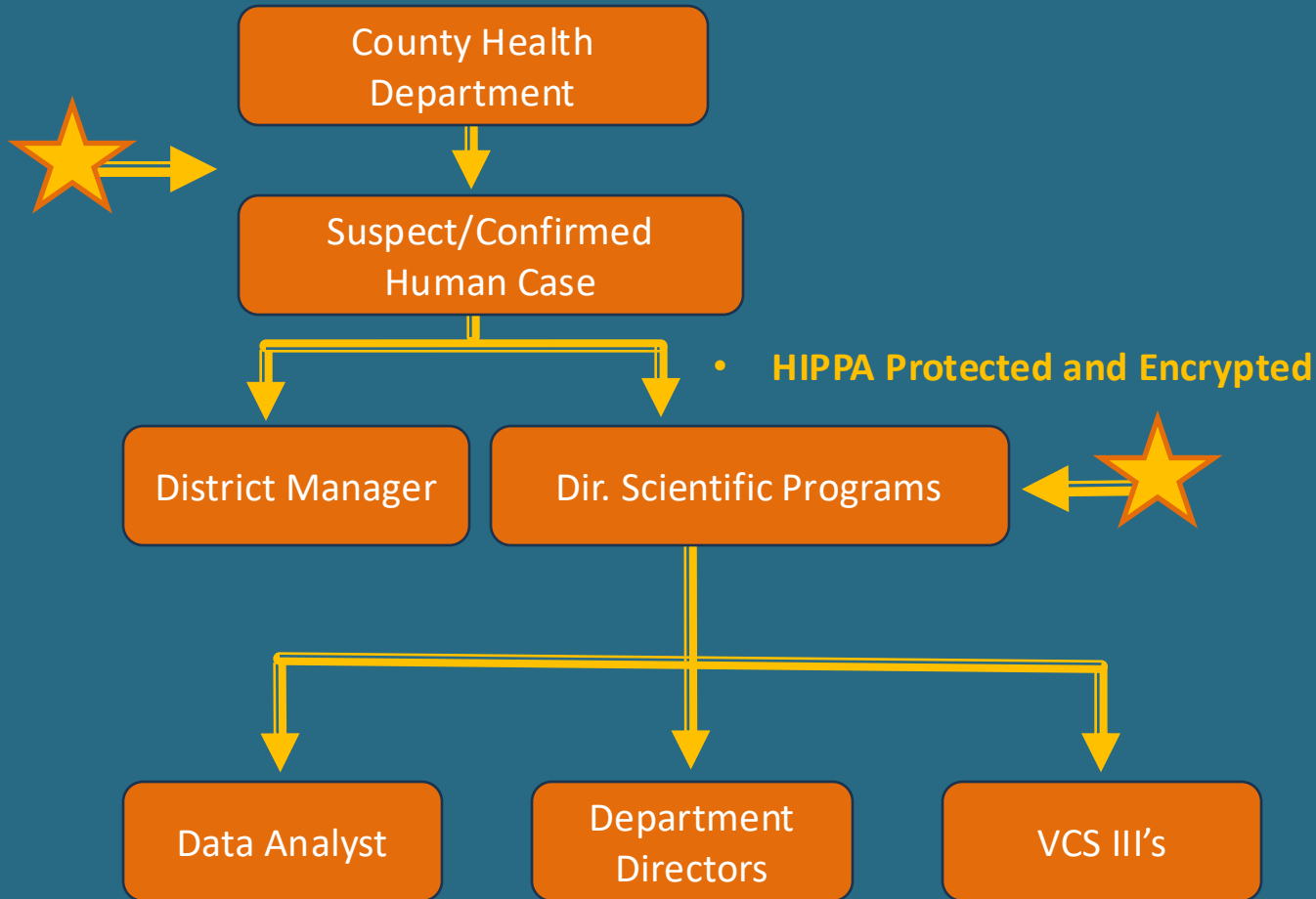


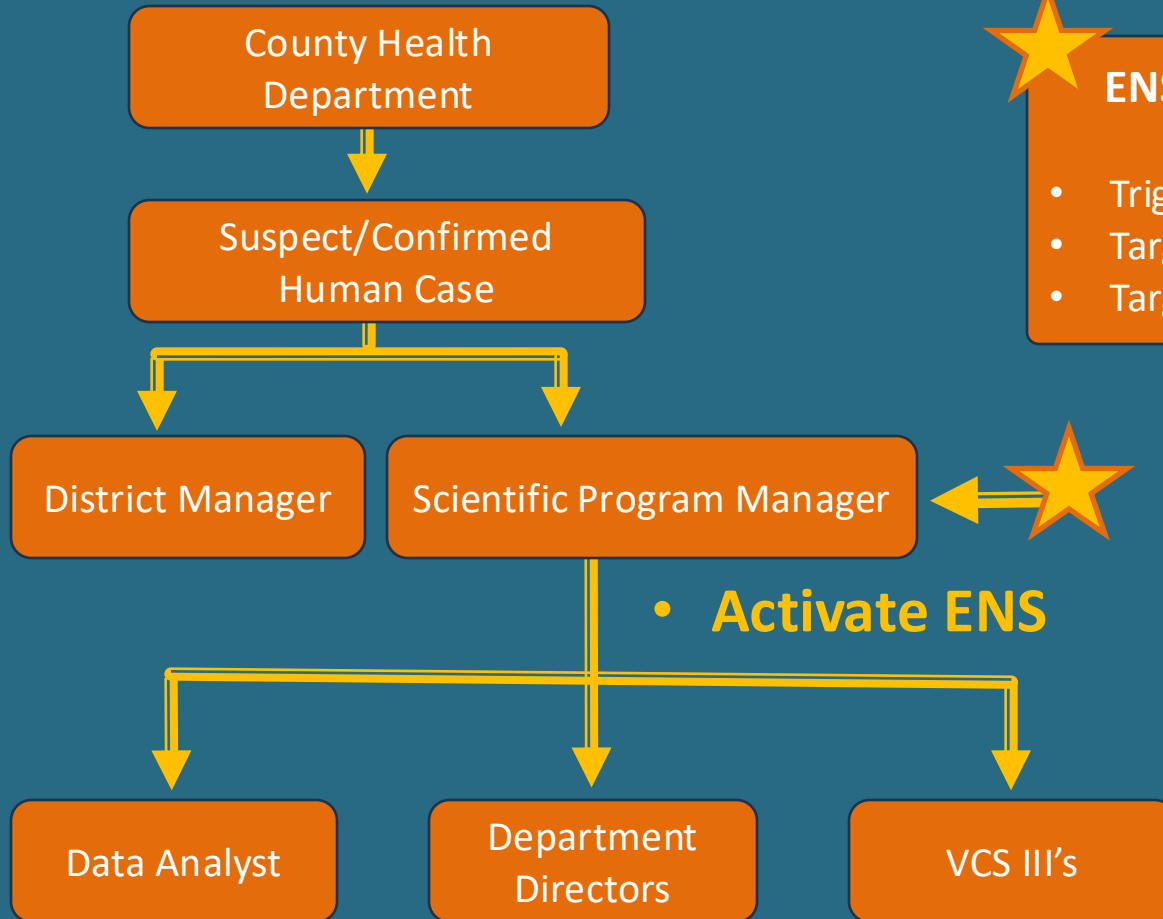
INVASIVE *Aedes* PROGRESSION



ENS







ENS Activation Email:

- Trigger Event
- Target Location
- Target Area Parameters

- **Activate ENS**



Critical to Success

- Flexible and fully integrated
- Build a foundation based on communication and chain of command
- Delegate: Trust your people and the process
- Make the process District-wide, involving all departments
- Must sustain multiple applications in rapid succession
- Accommodate for burnout



THANK YOU

Jason Farned

District Manager

San Gabriel Valley Mosquito and
Vector Control District

jfarned@SGVmosquito.org
626-814-9466



@SGVmosquito



Data Analyst

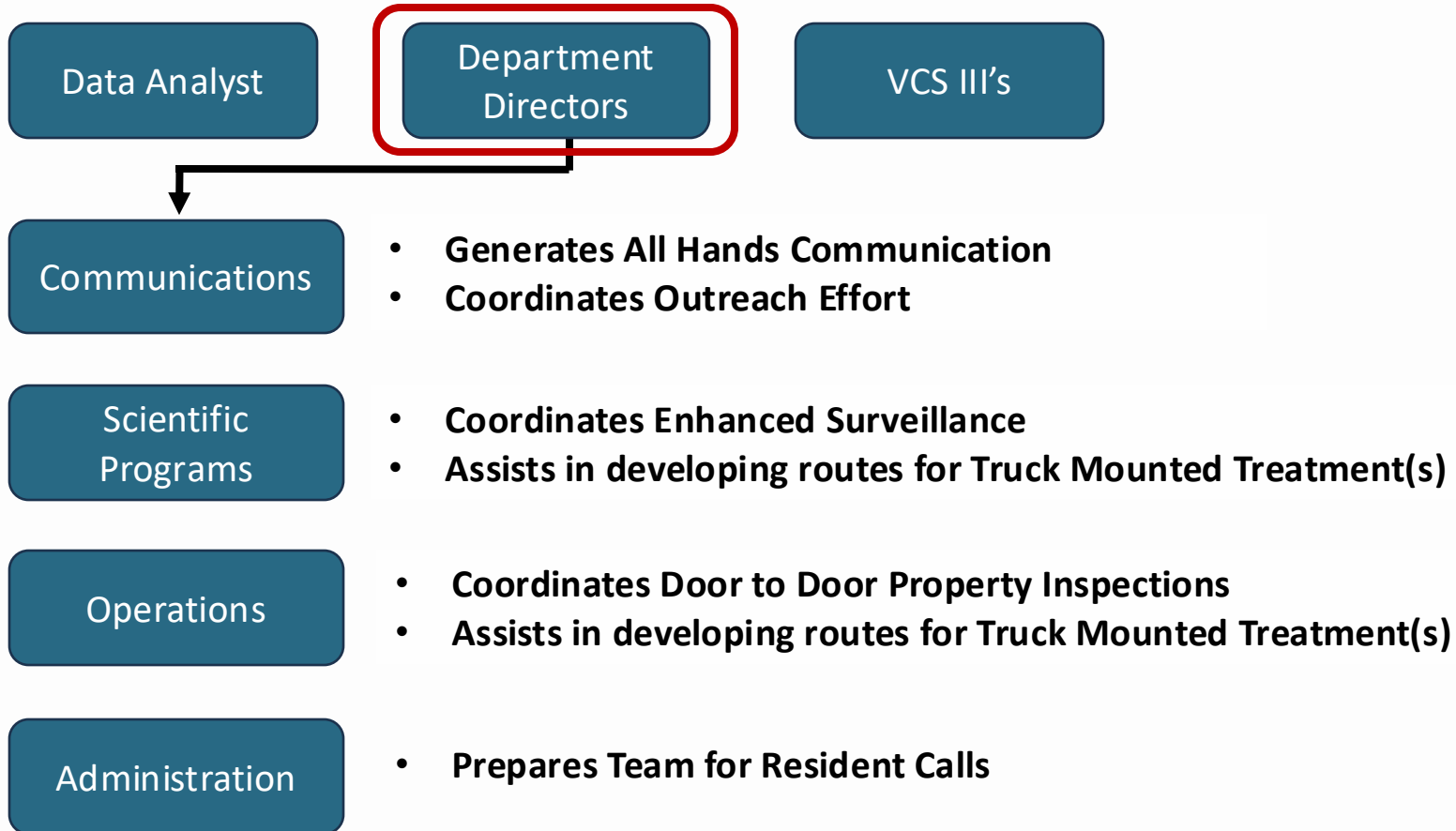
Department
Directors

VCS III's

Generates Digital Resources

- Creates Data Tracking Point Site based on Target Location
- Creates Target Area Map
 - ENS Summary Site
 - Individual Sites for each property within Target Area

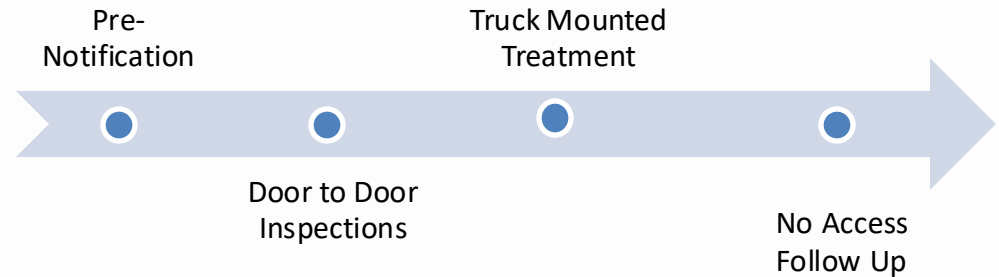






- **Prepares Response Timeline**

- Pre-notification Door Hangers
- Door to Door Inspections/Backpack Treatments
- No Access Follow Up Visits (1st and 2nd)
- Truck Mounted Treatments



- **Assigns Operational Resources**

Door to Door Inspection and Treatments

Operations

- Pre-Notification
- Door-to-door campaign
 - Property inspections
 - Source reduction
 - Handheld adulticide treatments
 - Resident education
- Investigate all known sources
- Inspect and treat underground and flood channels
- Conduct truck mounted treatments



Education and Outreach

Communications

- Targeted social media campaigns
 - Bite Prevention
 - Tip and Toss
- Educational material for the door-to-door campaign
- Outreach material for the truck-mounted treatments
- Plan for case confirmation

FOR IMMEDIATE RELEASE

9/9/2024

Media Contact:

Anais Medina Diaz, Director of Communications
San Gabriel Valley Mosquito & Vector Control District
626-422-6498 | amedinadiaz@sgvmosquito.org



Vector Control Response to Local Case of Dengue in Baldwin Park

Vector control has not identified or collected any Dengue infected Aedes mosquitoes.

Baldwin Park, Calif. (September 9, 2024) — The [San Gabriel Valley Mosquito & Vector Control District](#) (SGVMVCD/District) is working collaboratively with the [Los Angeles County Department of Public Health](#) to conduct additional surveillance, mosquito control, and educational outreach in the Baldwin Park community where a locally acquired case of Dengue has been confirmed. Testing of locally captured *Aedes* mosquitoes has not identified any Dengue infected mosquitoes.

The treatment may be postponed or delayed if weather conditions are not favorable, or if there are operational delays. Treatments may continue or resume in the following weeks depending on mosquito activity.



Enhanced Surveillance

- Trap target area immediately (day 1)
- Three traps minimum
 - 150 meters
- Seven traps for pre and post truck mounted ULV application
 - 800 meters (0.5 miles)
- Test all samples for dengue, Zika, and Chikungunya
- Weekly trapping – 45-day duration

